

LinceoVRViewer for PowerPoint

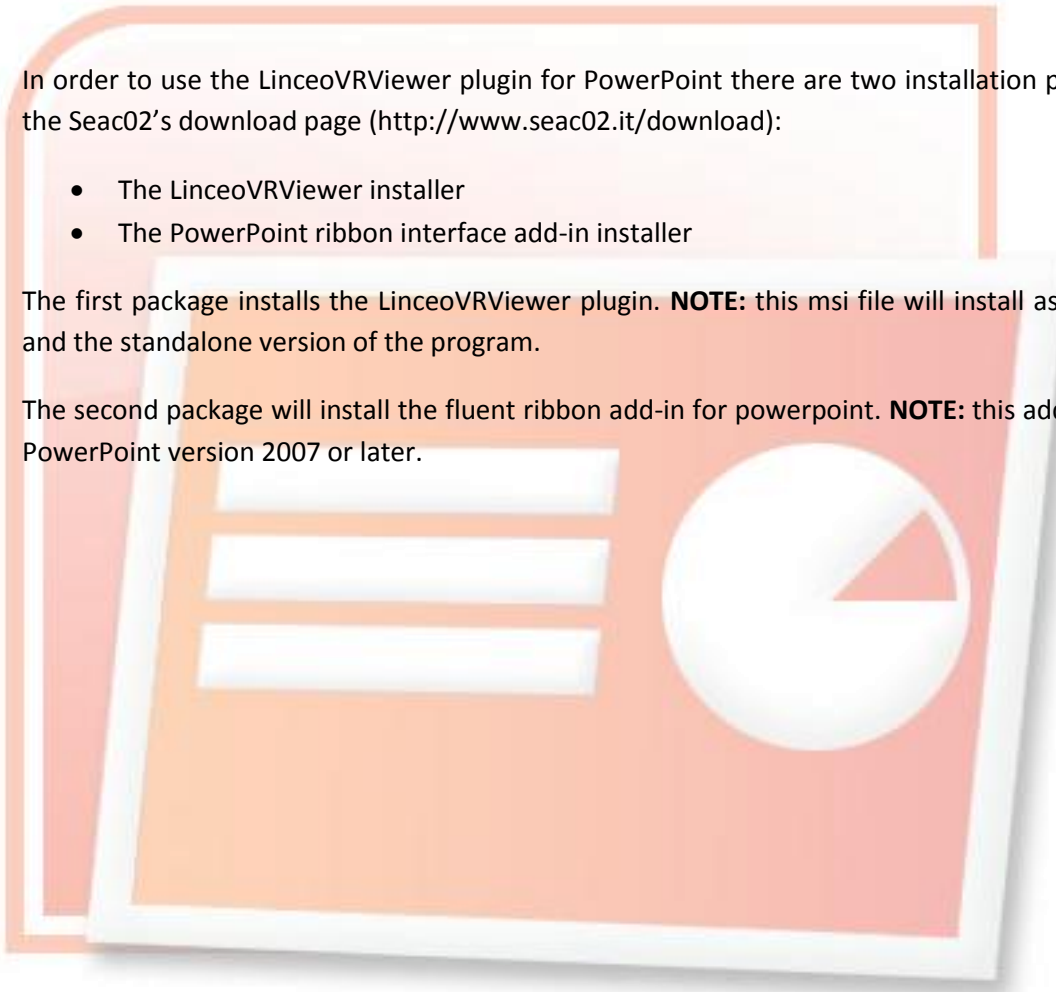
Download and Installation

In order to use the LinceoVRViewer plugin for PowerPoint there are two installation packages available on the Seac02's download page (<http://www.seac02.it/download>):

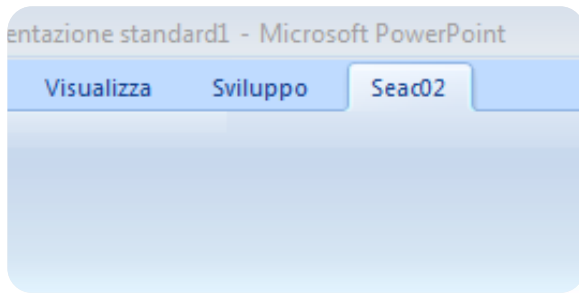
- The LinceoVRViewer installer
- The PowerPoint ribbon interface add-in installer

The first package installs the LinceoVRViewer plugin. **NOTE:** this msi file will install as well the web plugin and the standalone version of the program.

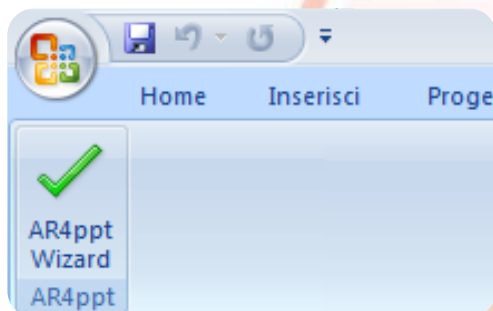
The second package will install the fluent ribbon add-in for powerpoint. **NOTE:** this add-in will work just for PowerPoint version 2007 or later.



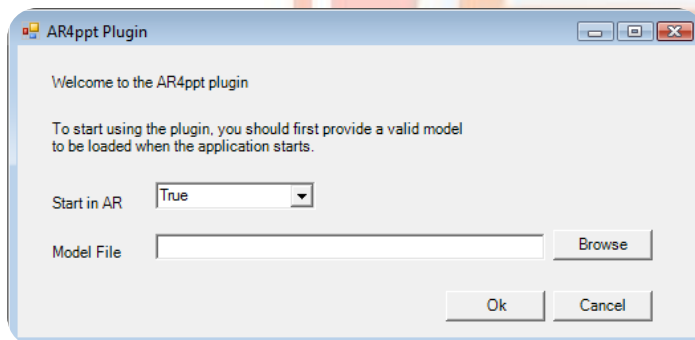
PowerPoint 2007 Ribbon Interface



The first step is to locate the “LinceoVRViewer” tab inside the PowerPoint 2007 ribbon. Clicking on the tab will open the plugin panel.



In the “linceoVRViewer” tab it may be found the Start Wizard Button. One click on the button will show the wizard panel.

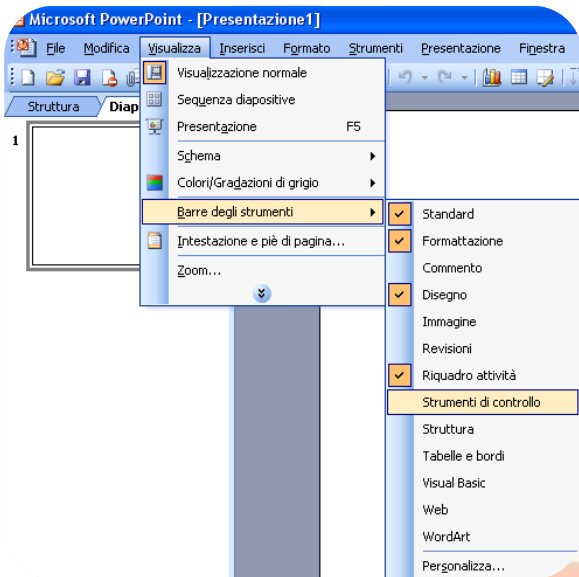


The wizard offers two simple options to the user:

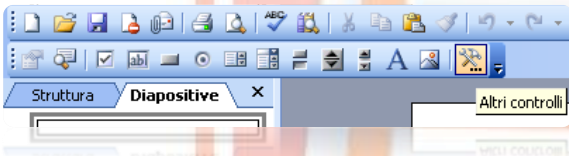
- Start in AR: if it's set to true, it will make the plugin start directly in AR.
- Model File: this field specifies the model location on the user's disk. For faster search it may be useful to use the “Browse” button.

Earlier PowerPoint Versions

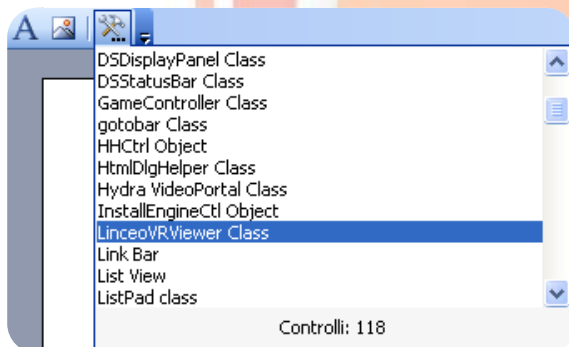
Since in the PowerPoint 2003 the Ribbon Interface is unavailable, the plugin must be added manually like any other COM control. Here is a brief explanation about how the user may find the LinceoVRViewer plugin in the controls list.



The first step is to add the Control Toolbox. To add the Toolbox it is necessary to open the **View** tab, and then select **Toolbars** and choose the **Control Toolbox** option.



In the **Control Toolbox** it is necessary to select the **More Controls** button.



In the combobox list the user must look for the control named "**LinceoVRViewer Class**". After the selection the user will have to drag a rectangle shape on the selected slide to insert the plugin in that position.

Usage Notes

When using the linceoVRPlugin in the PowerPoint 2003 Version, it must be remembered that right now only one instance of the plugin must be active at a time. Trying to insert more than one plugin inside a presentation would trigger system instabilities and possible crashes.

Presentations cannot be imported from other machines. The presentation must be prepared on the same machine on which it will be displayed.

